

radicon 

with you at every turn



A close-up photograph of a worker in a high-visibility, light-colored jacket with reflective stripes. The worker is focused on a large, complex industrial gear assembly, possibly a gearbox. The gear has many teeth and is partially disassembled. The worker's hands are visible, one holding a tool. The background is dark and industrial. The overall tone is professional and technical.

# SERVICE AND REPAIR

Radicon service engineers are ready and waiting 24 hours a day, 365 days a year, to provide the following services anytime, anywhere in the world.

On-Site Services

Repairs, Overhauls & Upgrades

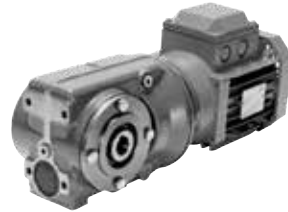
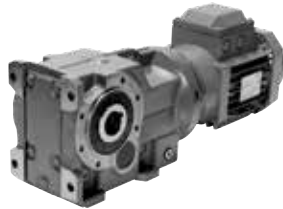
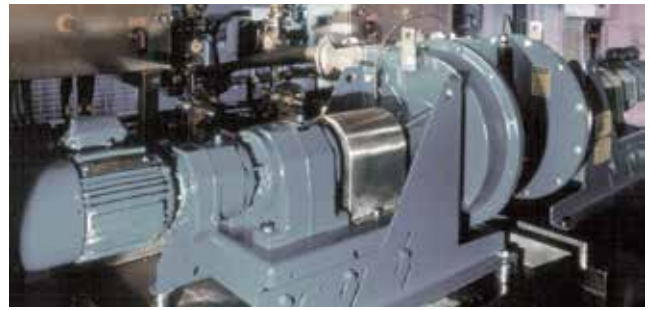
Drop in Replacement Gearboxes

Asset Management

Our dedicated service and repair engineers have the necessary expertise and experience to provide simple repair services through to complex overhaul projects in any industry on any brand of gearbox.

By working in partnership with you the customer our aim is to not only repair but to identify the root cause of your production problems, and work on upgrading and improving your process eliminating downtime and lowering your costs.

**24/7 Call Out: 07808 093 048**



### SERIES M IN LINE HELICAL GEARED MOTORS AND REDUCERS

Proven design geared motors with dry connection between motor and gearbox for easy removal of the motor.

**Unit Sizes:**  
01, 02, 03, 04, 05, 06, 07, 08, 09,  
10, 13, 14 and 16  
**Input Power:**  
Up to 160 kW \*  
**Output Torque:**  
Up to 20,000 Nm  
**Gear Ratios:**  
3.6:1 to 58:1 in two stage, up to  
16200:1 in combined form  
**Motor Sizes:**  
IEC Frames from 63 to 315

### SERIES K RIGHT ANGLE HELICAL BEVEL HELICAL GEARED MOTORS AND REDUCERS

Key dimensions throughout the range are interchangeable with many manufacturers allowing easy installation into existing applications.

**Unit Sizes:**  
03, 04, 05, 06, 07, 08, 09, 10, 12,  
15 and 16  
**Input Power:**  
Up to 160 kW \*  
**Output Torque:**  
Up to 33,000 Nm  
**Gear Ratios:**  
8.0:1 to 160:1 in three stage, up  
to 35000:1 in combined form  
**Motor Sizes:**  
IEC Frames from 63 to 315

### SERIES C RIGHT ANGLE HELICAL WORM GEARED MOTORS AND REDUCERS

Available with Drywell System for maximum protection against oil contamination on vertical shaft mixing and aerating applications.

**Unit Sizes:**  
03, 04, 05, 06, 07, 08, 09, and 10  
**Input Power:**  
Up to 45 kW \*  
**Output Torque:**  
Up to 10,000 Nm  
**Gear Ratios:**  
8.0:1 to 250:1 in two stage, up to  
60000:1 in combined form  
**Motor Sizes:**  
IEC Frames from 63 to 225

### SERIES F PARALLEL SHAFT MOUNT HELICAL GEARED MOTORS AND REDUCERS

Available with market leader KIBO tapered bushing system to allow trouble free removal of hollow shaft and gearboxes.

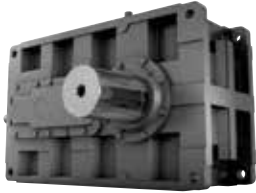
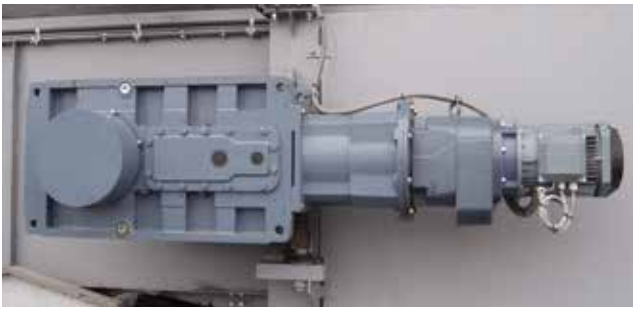
**Unit Sizes:**  
02, 03, 04, 05, 06, 07, 08, 09, 10,  
11 and 12  
**Input Power:**  
Up to 110 kW \*  
**Output Torque:**  
Up to 16,500 Nm  
**Gear Ratios:**  
5.0:1 to 100:1 in 2 stage, up to  
5600:1 in combined form  
**Hollow shaft:**  
25 mm to 100 mm  
**Motor Sizes:**  
IEC Frames from 63 to 225

\* Now available with compact motor option up to 7.5 kW, 4 pole execution.

## THROUGH LIFE COSTS

Whether you use drive and linear motion systems in your plant production line, or are a machine builder wishing to offer your customer the most reliable machine possible, we recognise the importance of minimising through-life cost.

A combination of rugged reliability, providing maximum life span and user friendly design, enabling easy maintenance, ensures that the products we offer are easy to live with, giving you peace of mind and allowing you to focus on the important areas of your day to day business.



### SERIES G HELICAL PARALLEL SHAFT AND BEVEL HELICAL RIGHT ANGLE DRIVE GEAR UNITS

Incorporating 3 stage high integrity sealing, split gear case design for easy maintenance.

### SERIES J HELICAL SHAFT MOUNT SPEED REDUCERS

Available with unique KIBO® tapered bushing system to allow trouble free removal of hollow shaft gearboxes.

### SERIES A WORM GEARBOXES

The Series A range of units can be mounted in the worm under, worm over and output shaft vertical mounting positions and provide a choice of shaft arrangements.

### SERIES BD SCREWJACKS

Supplied as individual products or engineered into complete linear motion packages, suitable for numerous applications including linear motion, positioning, pressing and load adjustment.

**Unit Sizes:**  
14, 15, 16, 17, 18, 19, 21, 22

**Input Power:**  
Up to 1,500 kW  
**Output Torque:**  
Up to 162,000 Nm

**Gear Ratios:**  
6.3:1 to 315:1 in multistage, up to 70,000:1 in combined form  
**Output Shaft:**  
Up to 240mm diameter  
**Motor Sizes:**  
IEC Frames from 200 to 315

**Unit Sizes:**  
11/12, 21/22, 31/32, 51/52, 71/72, 100, 110, 125, 140, 160, 190

**Input Power:**  
Up to 618 kW  
**Output Torque:**  
Up to 57,800 Nm  
**Gear Ratios:**  
5:1 to 20:1  
**Hollow shaft:**  
35 to 190mm  
**Motor Sizes:**  
IEC Frames B3 from 90 to 200

**Unit Sizes:**  
410, 510, 610, 730, 860, 1002, 1252, 1602, 2002, 10, 12, 14\*

**Input Power:**  
Up to 718 kW  
**Output Torque:**  
Up to 104,000 Nm  
**Gear Ratios:**  
from 5:1 to 70:1 single reduction and 4,900:1 in double reduction format  
**Output Shaft:**  
190mm

**Unit Sizes:**  
27, 40, 58, 66, 86, 100, 125, 200

**Load Capacity:**  
1 Kg to 100 tonnes  
**Linear Speed:**  
up to 5m/min  
**Materials:**  
Cast iron bodies and carbon steel screws are standard.  
  
Stainless steel construction available as special order.

\*Larger and special units available upon request.

## CUSTOMISED & SYSTEM SOLUTIONS

We recognise that a standard off the shelf product is not always the best solution for our customers needs. The design principles which we incorporate into our product range enable a high degree of product flexibility, enabling many alternative solutions to be offered.

Our experienced sales and engineering teams are able to provide both complete drive and linear motion system packages as well as a full customisation service, providing a specific product modification to meet your exact needs.



### ROLOID GEAR PUMPS

### SERIES X COUPLINGS

### SERIES E - INDUSTRIAL REDUCER

### PLANETARY

Suitable for pumping a wide variety of liquids which have a lubricating property, in applications such as Engines, Compressors, Gearboxes, Rolling Mills, Machine Tools, Process Plant, Pumping Sets and Turbines. HST version specifically designed for screw compressor applications.

A comprehensive range of shaft couplings, incorporating gear type, pin and bush type, Nylicon and mechanical torque limiting type, allowing both parallel offset and angular misalignment, virtually maintenance free, offering excellent durability and machinery protection.

The latest range of industrial reducer, giving optimum weight to torque ratio's providing the most cost effective solution on the market.

The Series P range of planetary gear units are designed to meet the requirements of the most demanding applications in the medium and heavy duty sectors of the power transmission market.

Available as version N, foot mounted and version S multi-mount case.

Available in 10 sizes, this modular design allows for quick assembly to the customers chosen configurations. Available in line and right angle with a choice of foot mounted or flange mounted case designs.

**Unit Sizes:**  
9, 7, 6, 5, 4, 3, 2.5, 2, 1.5  
**Flow Rate:**  
up to 2,500 litres/min

**Unit Sizes:**  
Accommodating shaft size up to 540mm dia.  
**Load Capacity:**  
Up to 1,100,000 Nm

\*\* Not available Atex certified

**Unit Sizes:**  
11,13,14,15,16,17,18,19,20,21, 22,23,24,25,26  
**Input Power:**  
Up to 4,825 kW  
**Output Torque:**  
Up to 130,000 Nm  
**Gear Ratios:**  
1.25:1 to 550:1 in multi-stage  
**Output Shaft:**  
Up to 220mm diameter

**Unit Sizes:**  
01,02,03,05,08,12,16,25,40,65  
**Input Power:**  
Up to 90 kW  
**Output Torque:**  
Up to 65,000 Nm  
**Gear Ratios:**  
3.6:1 to 2,500:1 in multi-stage  
**Output Options:**  
Available as solid keyed, solid splined, hollow splined and shrink disc  
**Motor Sizes:**  
IEC Frames up to 280

## APPLICATION EXPERTISE AT YOUR SERVICE

An unrivalled depth of customer application expertise stretching back over 150 years enables us to provide the optimum solution for your drive requirements. Our team of Application Engineers are available to review your needs, understand your problems and recommend the best possible drive or linear system solution to maximise the operation of your equipment and minimise the through life cost.

**Atex** - All our products can be supplied Atex certified on normal lead times \*\*



## PARTNER BRANDS



### MITSUBISHI



As a preferred supply partner with Mitsubishi, Radicon now supply variable speed drives, PLC's, HMI's and servo motors to complete the power transmission package.

Radicon now offer end to end solutions to ensure your process runs efficiently.

#### Servo Motors:

Output: 0.5 to 55 kW  
Speeds: 1,000 to 3,000 rpm

#### Variable speed drives:

0.12kW – 500 kW

### WEG ELECTRIC MOTORS



As a preferred supply partner with WEG, Radicon now supply electric motors to complete the power transmission package. The range covers standard IEC motors from stock to medium and high voltage bespoke engineered motors.

WEG's specialism in custom built medium and high voltage motors for drop in replacements are an ideal fit for the custom and drop in replacement range of gearboxes Radicon supply.

#### Unit Frame Sizes:

63 – 355\*

#### Unit Powers:

0.12kW – 500 kW

#### Speeds:

2 Pole - 3,000 rpm  
4 pole - 1,500 rpm  
6 pole - 1,000 rpm  
8 pole - 750 rpm

\*Medium/High voltage available on request.

### CONDITION MONITORING



In conjunction with Radicon Service & Repair Partner PCMS, a full range of condition monitoring services are now available to complement the product range.

#### Services include:

Gearbox health inspections  
Remote data analysis  
Oil analysis  
Vibration analysis & balancing  
Alignment checks  
Infrared thermography  
Ultrasonic testing  
Stress wave analysis  
Preventative maintenance packages

### PERMA



We can now offer the full range of single and multipoint lubrication systems.

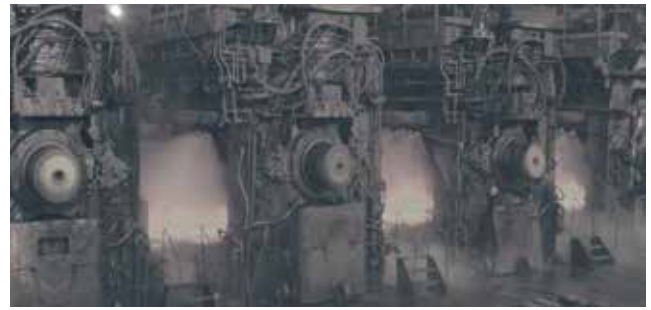
Automatic lubrication systems from Perma reduce bearing wear by providing a continuous supply of fresh lubricant. This prevents over-lubrication, lubricant starvation and contamination.

#### Typical applications:

Conveyors  
Fans  
Pumps  
Motors

#### Unit sizes:

Available in various sizes and configurations to meet the requirements of the application. Each installation can provide permanent lubrication for up to 24 months



## DROP IN REPLACEMENTS

Radicon now has the capability to design, engineer and supply special gearboxes to replace any brand of gearbox whether current or obsolete with the minimum amount of modification and production downtime.

Radicon is able to offer drop in gearboxes for any brand of gearbox either current or obsolete, including, but not limited to the following brands:

David Brown  
Falk

Hansen  
SEW

Siemens Flender  
Renold

Santasalo  
TGW

## ENTRY ROLL GEARBOX



Radicon recently supplied a drop in replacement to a major UK End User for the manufacture of steel. The requirement was for an existing gearbox to be replaced without any modifications to the surrounding mounting base and equipment.

Single helical gearbox with a ratio of 1/1  
A single extension solid input shaft and double output shafts  
Transmits 17kW at a speed of 263 RPM

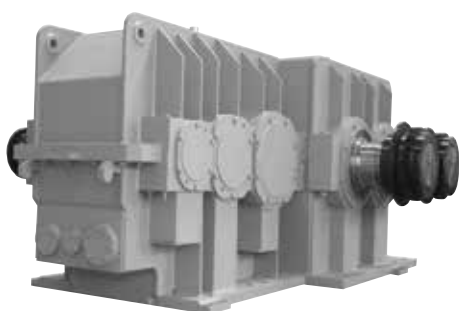
To ensure suitability to withstand the duty the gearbox offers a service factor of 8.24 for strength in accordance with AGMA 2001-B88 selection criteria.

## CUSTOM MANUFACTURED GEARBOXES

Radicon offer a high quality range of custom engineered gearboxes into a wide range of industries and applications. Major investment in the business coupled with our design, engineering experience and industry expertise ensures our custom engineered gearboxes reach the highest standards of quality, reliability and durability.

Radicon's dedicated team of application engineers work in partnership with each customer to ensure our products are the optimal solution for each individual customer, while still delivering high quality and reliable products that the Radicon business is renowned for.

## INDUSTRIES & PRODUCT RANGE



### Power Generation

Cooling Tower Drives  
Coal Pulveriser Drives  
Air Preheater Drives

### Cement

Mill Drives  
Retrofit Replacements

### Steel

Coiler/Uncoiler & Pay-Off Reel Gearboxes  
Rolling Mill Drives  
Speed Changing Gearboxes

### Material Handling


Ladle Crane Hoist Gearboxes  
Travel & Cross Travel Drives  
Heavy Duty Conveyor Drives

### Rubber & Plastics

Banbury Mixer Drives  
Calendar Drives

### Sugar

Planetary Gearboxes  
Sugar Mill Drives  
Dual Tandem Mill Gearboxes



**Radicon** believes in engineering quality relationships with our customers that strengthen what we can achieve together. Our business and the people within our business are committed to building long lasting partnerships that are as reliable as our products and as smooth as our service.

Radicon and sister company Benzlers are now part of Elecon Engineering, Asia's largest and fastest growing gear manufacturer. This partnership means that we can offer our customers an enhanced range of standard and bespoke engineering solutions including drop in replacements, all supplied with the product quality and engineering expertise demanded from and delivered by the Radicon business.

**Radicon - with you at every turn**

**Benzlers**

Denmark +45 36 34 03 00  
Finland +358 9 340 1716  
Germany +49 800350 4000  
Italy +39 02 824 3511  
Sweden +46 42 186800  
The Netherlands +31 77 324 59 00  
[www.benzlers.com](http://www.benzlers.com)

**Radicon**

Thailand +66 3845 9044  
United Kingdom +44 1484 465 800  
USA +1 847 593 9910  
[www.radicon.com](http://www.radicon.com)