

### Specifications

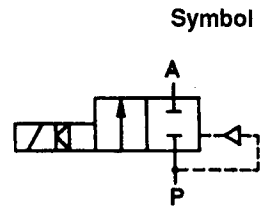
Orifice Dia. (IN)	Cv-Rating**		Port Connection (NPT)	Pressure Rating (PSI)*				Weight (LBS)
	Water (GPM)	Air (SCFM)		Water		Air		
7/16	2.4	77	1/2	15-700	15-700	15-700	15-700	1.3
3/4	5.8	190	3/4	15-355	15-355	15-565	15-455	2.7
1	11.7	380	1	15-355	15-355	15-565	15-455	3.8
1-1/4	21	680	1-1/4	15-355	15-230	15-355	15-230	6.3
1-1/2	21	680	1-1/2	15-355	15-230	15-355	15-230	7.3
2	42	1400	2	15-355	15-230	15-355	15-230	12.8
2-1/2	42	1400	2-1/2	15-355	15-230	15-355	15-230	15.2

\* Maximum pressure rating for UL listed valves is 355 PSI.  
 \* Maximum pressure rating for Buna seals is 230 PSI.  
 \*\* Measured at 68°F with 85 PSI upstream pressure and a pressure drop of 15 PSI across the valve.

NOTE: A minimum pressure differential of 15 PSI is required for full flow. Operation below this value will yield unpredictable flow characteristics.

### Valve Operations

**OPERATION A**  
 Normally-closed 2/2 valve.  
 Internally piloted piston valve  
 with 2-way pilot control.



### Technical Data (Valve)

Installation: As required (preferably coil uppermost)  
 Material: Body and seat of brass.  
 Maximum Ambient Temp: 130°F

Seal Material	Code	Fluids Handled (Examples)	Temperature Range
NBR	B	Compressed air	+14°F to +194°F
NBR/PTFE	K	Neutral fluids, e.g., compressed air, water, hydraulic fluid	+32°F to +212°F
FPM/PTFE	H	Neutral fluids, e.g., hot air, oxygen, perchlorethylene, solvents	+32°F to +212°F

Orifice Dia. (IN)	Response Times (ms)	
	Opening	Closing
7/16	20-40	100-250
3/4 to 1	100-400	300-1500
1-1/4 to 1-1/2	100-700	600-1500
2 to 2-1/2	500-1200	1500-5000

Times measured at outlet A on energizing (or de-energizing) of valve until attainment of pressure rise to 90% (or pressure drop to 10%) of test pressure of 85 PSI.

### Technical Data (Actuator)

Coil Voltage: Standard 12/DC, 24/DC, 24/60, 120/60, 240/60<sup>1)</sup>  
 Available AC 12-440V, 50 or 60Hz, DC 6-220V  
 Voltage Tolerance: ± 10%  
 Power Consumption: AC 21 VA (Inrush), 12 VA/8 W (Hold) DC 8 W  
 Duty Cycle: 100% continuous rating  
 Cycling Rate: With lubrication up to 250 cpm  
 Electrical Connection: E = Spade connection  
 H = UL listed plug (For UL listed valves only.)  
 A = 3-wire leads with conduit hub required on FM, Div. 1 valves

<sup>1)</sup> The 120V/60Hz, and 240V/60Hz coils can be used at 110V/50Hz and 220V/50Hz, respectively.

### Agency Approval Codes\*

R UL Component Recognized  
 U UL Listed  
 Z UL Listed  
 FM Class I, Div. 2, Group A,B,C,D  
 Class II, Div. 2, Group E,F,G  
 Class III, Div. 1&2  
 Operation Temp T4  
 X FM Class I, Div. 1, Group A,B,C,D  
 Class II, Div. 1, Group E,F,G  
 Class III, Div. 1  
 Operation Temp T4<sup>2)</sup>

\* Approvals pending sizes 1-1/4 to 2-1/2  
<sup>2)</sup> Operation Tem. T6 available with a reduced pressure range. Please consult factory for details. (Approval code = Y)

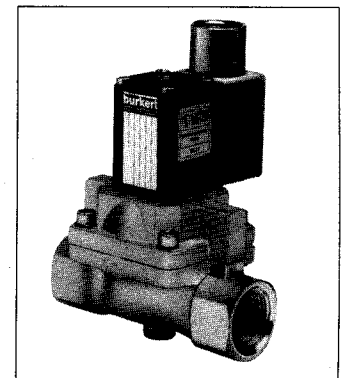
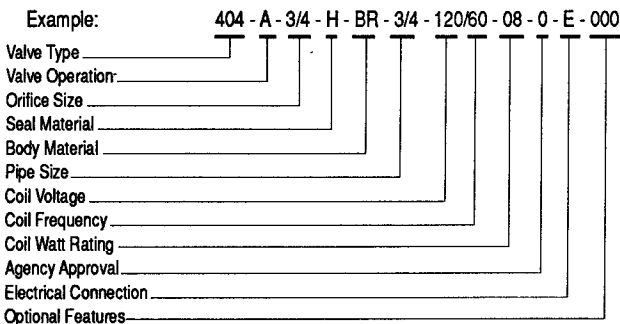
### Accessories

A-1050-S001-021-00 Type F Electrical Connector  
 A-1050-S016-021-00 Type Y Electrical Connector

We reserve the right to make technical changes without notice.

### Example for ordering

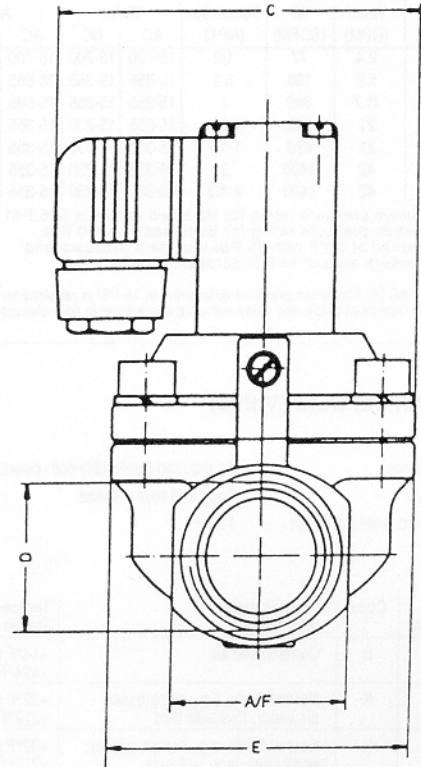
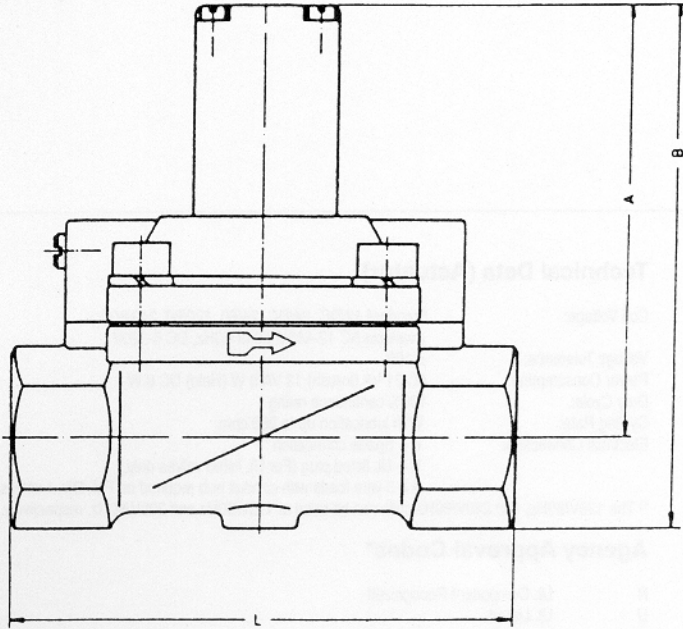
The necessary details for correct ordering are formulated as shown in the example below.



Type 404

# Type 404

## 2/2 Solenoid Valve for Pneumatics, Neutral Fluids Internally Piloted Piston



Orifice Dia. (in)	D (NPT)	A	B	C	E	L	A/F
7/16	1/2	3.19	3.72	2.56	1.26	2.56	1.06
3/4	3/4	3.58	4.21	3.11	2.36	3.94	1.26
1	1	3.80	4.61	3.31	2.76	4.53	1.61
1-1/4	1-1/4	5.35	6.34	3.78	3.35	4.96	1.97
1-1/2	1-1/2	5.51	6.69	3.78	3.35	4.96	2.36
2	2	6.42	7.80	4.37	4.53	6.46	2.76
2-1/2	2-1/2	6.42	8.11	4.37	4.53	7.09	3.35

NOTE: UNLESS OTHERWISE NOTED, ALL DIMENSIONS IN INCHES.

We reserve the right to make technical changes without notice.